

IGS-190-M

The Animazoo IGS-190-M is the 9th version of the world's first inertial gyroscopic motion capture system. Easy to use, outstandingly accurate, portable and real-time, the IGS-190-M is precision motion capture at its finest.

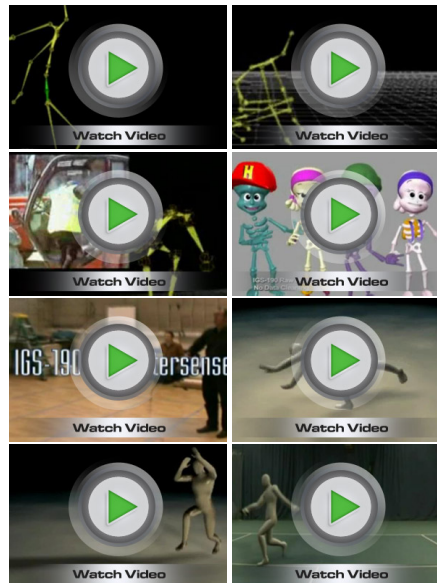
The IGS-190 features nineteen tiny inertial sensors attached to a flexible lycra suit. The gyros are moveable for optimum placement ensuring accuracy of measurement from the joint not the muscle.

Technical Specifications

Setup Time	15 minutes
Time to Put on Suit	5 minutes
System Boot to Capture	7 Minutes
System Weight No Battery	2 kg
Actor Size & Weight Range	Unlimited
Suit Material	Lycra
Inertial Gyroscopes	19
No. of Joints/Rotations Sensed	19
Optional Switches	6 Digital
Sensor Resolution	0.01 Degree
Sensor Calibration	Delivered Calibrated
Wireless Range	Up to 200m
Simultaneous Wireless Actors	16
Operating Environment	Dry 0-40°C
Ability to Roam	Unlimited
Magnetic Interference	None
Occlusion / Marker Swapping	None
Global Translation Sensing	Yes - Calculated
Optional Prop Channels	1
Captured Frames/Second	15/30/60/120
Batteries Supplied	NiMH rechargeable pack
Battery Run Time	3 hrs (per pack)
DC Input	7.2 to 9.6v
Warranty	12 months parts & labor
Software Upgrades	Free for 12 months
Phone & Email Support	Free for 12 months
System Requirements	P3 or higher, 256 RAM
User Operating System	XP, Vista



IGS-190



Systems

- [IGS-190-M](#)
- [IGS-190-H](#)
- [IGS-Mini](#)
- [Gypsy 7](#)
- [Worldwide Systems Map](#)
- [System Comparison](#)

Software

- [Animazoo OS](#)
- [Editing Suite](#)
- [AutoCal](#)
- [Internet Streaming](#)
- [Real-Time Drivers](#)

