

A Digital Reconstruction Procedure for A Disappeared City Space and Its Activities

Shen-Kai Tang, Yu-Tung Liu

Graduate Institute of Architecture, National Chiao Tung University, Taiwan

Abstract. Computer simulation technology was used well in virtual archaeology during the past five years but will be insufficient gradually in the future, just because the simulations have extended from static issues, such as implements, architectures and a whole city, to motional issues, such as cultural activities in a city. This paper developed a digital reconstruction procedure that integrated three main technologies including 3D scanner, motion capture and virtual reality cave (VR Cave), and implemented it to virtually reconstruct Chang-an City that existed 1400 years ago but disappeared now. The results of the simulations are not only realistic enough to being inside but also highly approved by archeologists, art historian and architects.

Keywords. Virtual archaeology; 3D scanner; motion capture; virtual reality cave

Introduction

The data of historical architecture, either the east or the west, was recorded by writing, drawing, pictures and models (Ma, 1984; Hsu, 1990; Lee, 1990; Liu, 1996). The content of these data included structure, form, scale and material of buildings (Fu, 1963; Guo, 1963; Lai, 1997). With respects to a historical city, the media of recording data was the same as stated above; however, the content had expanded from representing a single building to the city as a whole. Not only the design principles but also the social system, the cultural activities, and the city life at that time were recorded (Tatsuhiko, 1986, 1994, 1995, 1997, 1998). By means of these recorded data, we are able to restore the architecture and the city as well as the cultural activities and the city life of that particular time.

Recently, because of the developments of computer graphic technology, many researchers attempted to use computer simulation to reconstruct ancient cities virtually, such as the Chan-An city in Tang dynasty (Heng, 1999) and the Aztec Temple Square (Serrato-Combe, 2001). Virtual Archaeology has already become a new method of archaeological reasoning solemnly. No matter if the ancient cities will be reconstructed physically or not, there is no doubt that using computer simulation will make the result more accurate (Heng, 1999; Potier, 2000; Tang and Liu, 2001; Tang 2001). Furthermore, it will even indicate problems that could not be found and solved by using ordinary research methods before (Tang and Liu, 2001; Tang 2001).

Problem and Objective

However, the main technologies that were applied in the virtual archaeology projects mentioned above, such as 3D modeling and high quality rendering, have gradually become insufficient. For examples, making 3D models of static implements, architectures and even a whole city manually wasted time and energy of research staffs. It was also hard to reconstruct the motions of people to simulate the activities of the city life. The perception of high quality rendering images or animations still can't satisfy the fantasy of being in virtual space and so on. According to these limitations, the problem of this research is that how can we seek, use and integrate the newest digital technologies to make the process of virtual archaeology more and more complete? The objective of this research is to propose a digital reconstruction procedure for a disappeared city and its activities.

Methodology and Steps

The whole research project takes Chang-an City of Tang dynasty that existed 1400 years ago but disappeared now as an example and was divided into two parts. The first part was the collection and reasoning of cultural and architectural data, and the second part was the integration and implement of new digital technology. Because the detail discussions of the first part have already published in relevant research papers (Tang and Liu, 2002), this paper will focus on the second part for further investigation. There are four steps in this research. First, we integrate several digital ways such as the use of 3D scanner, ordinary 3D modeling and speculative modeling to make static models. Second, we use motion capture technology to fabricate motional models that represent the activities at that time. However, how to integrate static and motional models in digital environment is still a very important issue. Finally, we use VR technology and VR Cave representation to improve the spatiality of high quality animations.

The construction of static models

The first way of making 3D models is the use of 3D scanner. Because there are many underground and well-protected relics preserved in museums, we can use 3D scanner (figure 1) to transfer the physical objects into digital data directly (figure 2). By so doing not only the time of making model will be decreased but also the complication of models will be increased. The second way is called ordinary 3D modeling. It means that according to accurate descriptions, such as measurements and textures, we can make digital models easily. Although many important relics are not available, we can still acquire accurate measurements and textures from some relevant publications of photography and research papers. The last way is speculative modeling. There are many figures of people and implements on wall paintings in the graves (figure 3), but these figures not only described objects roughly but also fade away their colors. So we try to reconstruct the scales and measurements of objects in the digital environment directly, and use image process technology to speculate the original colors of them (figure 4).



Figure 1. The equipment of 3D scanner



Figure 2. The result of 3D scanning



Figure 3. The figure of car on the wall painting in the grave

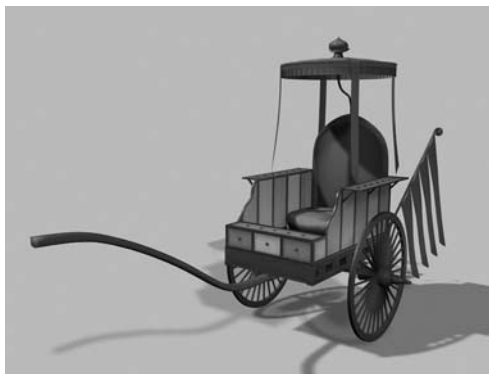


Figure 4. The result of speculative modeling

The fabrication of motional models

In order to represent the cultural activities lively, we try to transfer a freezed posture of people on a wall painting into animations of realistic motions. Let us take dancing for example, and there are three steps to do. First, we use motion capture technology to record the actions of the dancer who is familiar with the dance of Tang dynasty (figure 5). The theorem of motion capture is that eight infrared cameras can sense the locations of 32 reflex balls that are pasted on important joints of human body, and the

computer can acquire the motions of people after calculate the digital data of 32 reflex balls. Second, we bind the data to a model of human body that was made by mimicking the figure of wall painting (figure 6). Finally, the software calculates the interactions between the body and the cloth on it, and the live actions of a female dancer with beautiful cloth are conducted (figure 7).



Figure 5. The processes of motion capture



Figure 6. The human figure on the wall painting



Figure 7. The final result of making motional model

The integration of static and motional models

After having the static models of architecture, models of implements, and models of actions, we start to integrate them together digitally and specifically. Let's take playing chess for example. In the beginning, we based on a painting that recorded the arrangement of interior furniture (figure 8), and try to put the models of implements together in 3D virtual environment where we can move objects and viewpoints freely. By so doing we can realize the actual location and relationship of every objects. Second, we put the arranged interior models into an architectural model (figure 9). We can't sure where is the accurate place, and just put them at a pavilion which size is suitable for the interior arrangement to speculate. Finally, according to stories of playing chess recorded in some literatures, we combine the human model that can act the motion of playing chess with the whole architectural models (figure 10).

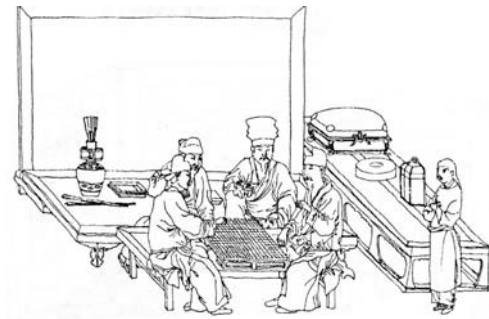


Figure 8. A painting that recorded the arrangement of interior furniture

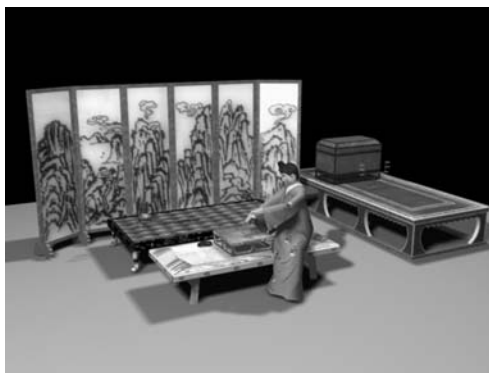


Figure 9. The arranged interior models in an architectural model



Figure 10. The result of playing-chess simulation

Immressive and stereo representation

After conducting the high-quality models and high-resolution animations, we try to imply the VR technology to convert the flat animations into stereo and immersive representation. Making two-eyes animations that have 5 degrees different of viewpoints is the first step to do. By means of the polarizing filters, we can control that each eye only can perceive each particular animation, and the sense of stereo is conducted (figure 11). In order to create the sense of immerse, the Opto- Electric & Systems laboratories (OES) of Industrial Technology Research Institute (ITRI) in Taiwan design the VR Cave system (figure12). This equipment is composed by three projection screens, each of which have 120 degrees included angles, and six projectors. After projecting six animations on three screens, the watcher wearing polarizing glasses can have the sense of being inside (figure 13).

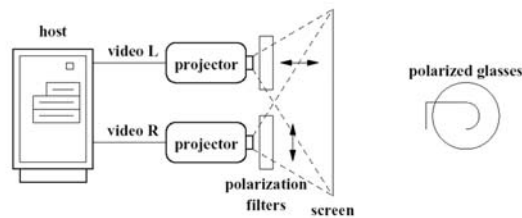


Figure11. The theorem of polarizations

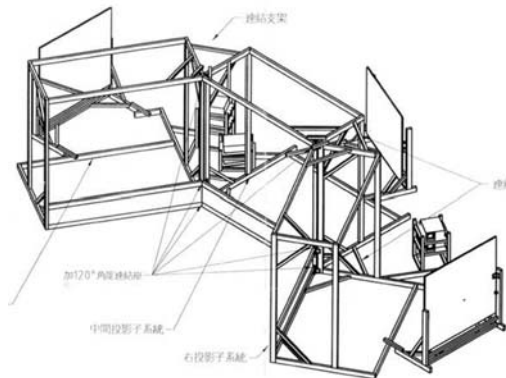


Figure 12. The design of the VR Cave

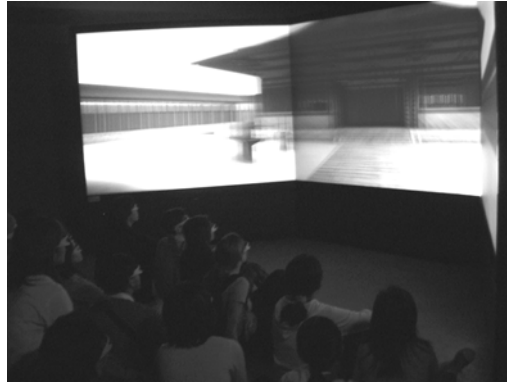


Figure 13. The result of VR Cave simulation

Results

In conclusion, because of the digital reconstruction procedure that contains 12 steps in 4 main parts, we successfully reconstruct the Chang-An city of Tang dynasty and activities happened in it including foreign diplomats entering Chang-An city, drinking in Li-fun, foreign diplomats entering Lin-Da Palace, playing polo game, ladies playing chess, and Banquets in the Palace (Tang and Liu, 2002). These simulations are highly approved by archeologists, art historian and architects.

Table 1. The content of Virtual Chang-An City

Virtual Chang-An City	Architectural data	Cultural data
	Lin-Da Palace	Foreign diplomats entering Lin-Da Palace
		Banquets in the Palace
		Ladies playing chess
		Playing polo game
	Li-Fun	Drinking in Li-fun
Min-Da Gate	Foreign diplomats entering Chang-An	

References

- Chiu, M.L. and Lan, J.H.: 2001, Discovery of historical Tainan: a digital approach, *Automation in Construction* 10, 355-364.
- Hsu, M. F.: 1990, Traditional Craftsmen and Local Community: Hsin-pu Taiwan interpreting the socio-cultural role that traditional craftsmen played within a local community for building a house, *Traditional Dwelling and Settlements: Working Paper*, 20, 1–40, University of California, Berkeley.
- Hsu, M. F.: 1992, The Impact of Japanese Colonization on the Traditional Tainan City, 1895-1945, *Traditional Dwelling and Settlements: Working Papers*, 47, University of California.
- Heng, C. K.: 1999, A Multimedia Package On Tang Period Chang'an, *ICHIM1999*, 79-83.
- Liu, Y.T.: 1996, Understanding of architecture in the computer era, Hu Publish, Taipei.
- Liu, Y.T.: 2001, The Hsinchu experience: a computerized procedure for visual impact analysis and assessment, *Automation in Construction*, 10(3), 337–343.
- Lee, C.L.: 1990, The technology of historical architecture in Taiwan, *Collection of papers on Restoration Techniques for Historical Sites*, 50–61.
- Ma, B.: 1984, *Timber Construction Technology of Chinese Ancient Architecture* (in Chinese), Science Press, Beijing.

- Potier, S.: 2000, Computer graphics: assistance for archaeological hypotheses. *Automation in Construction*, 9(1), 117-128.
- Serrato-Combe, A.: 2001, From Aztec pictograms to digital media- the case of the Aztec Temple Square, *ACADIA 2001*, 34-43.
- Tang, S.K.: 2001, A study of the computerized procedure in the restoration of historical architecture, Thesis of master degree, IAA NCTU.
- Tang, S.K. and Liu, Y.T.: 2001, The visual harmony between new and old materials in the restoration of historical architecture, *CADDRIA 2001*, 205-210.
- Tang, S.K.; Liu, Y.T.; Fan, Y.C.: 2002, How to simulate and realize a disappeared city and city life? -- A VR cave simulation, In *Proceedings of The fifth Conference on Computer Aided Architectural Design Research in Asia 2002*.
- Wu, C. and Zhang, H.: 2001, CAD system for Chinese traditional architecture, *CADDRIA 2001*, 331-335.